

Students and Young Engineers Meeting

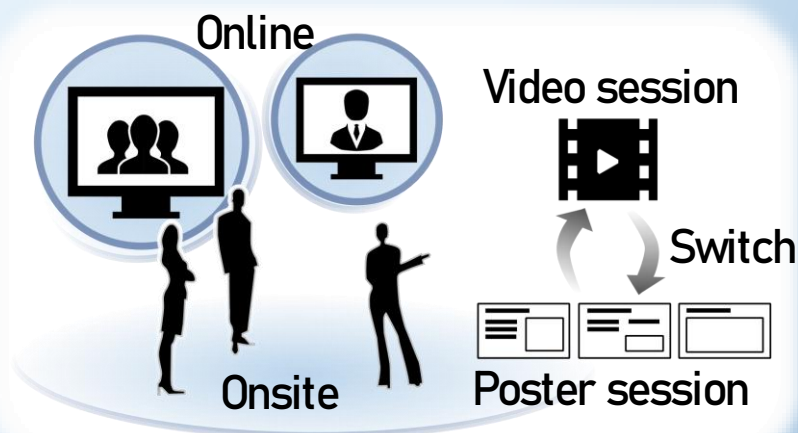
-- Laboratory Exhibition in IPEC 2022 --

This event promotes international exchange between students and young engineers!
Enjoy the feeling of a short trip through poster/video presentations!

Students and Young Engineers Meeting in IPEC 2022 is sponsored by IEEE PELS

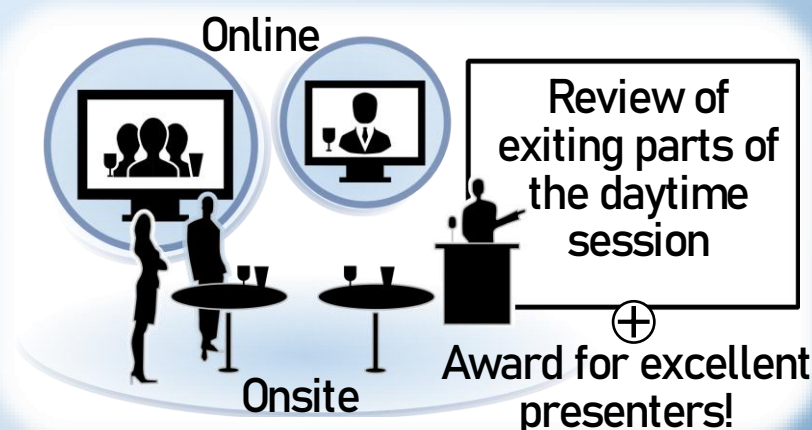
Daytime Meeting details

- Date: Sunday, May 15th, 2022
- Time: 10:00 AM – 01:00 PM JST(GMT+9)
- Venue: Room 408, 409 @Himeji City Culture and Convention Center & online
- Content: Poster presentations (3-6 slides) with videos (about 3 mins) about the participants' lab and tourist attractions around the university. Presentation of questionnaire results.



Evening Meeting details

- Date: Sunday, May 15th, 2022
- Time: 08:00 PM – 09:30 PM JST(GMT+9)
- Venue: Room 408,409 @Himeji City Culture and Convention Center & online
- Content: Online & onsite event for more free conversation with a light meal. Review of daytime event presentations and award giveaway for excellent presenters.



- How to join:
1. Register for [IPEC 2022](#)
 2. Register for [THIS EVENT](#)
 3. Answer [a questionnaire](#)

Important dates for presenters

- Apr. 25th Determine tentative presenters
- May 2nd Submission of presenter's video and poster slides

Past event in IPEC Niigata 2018



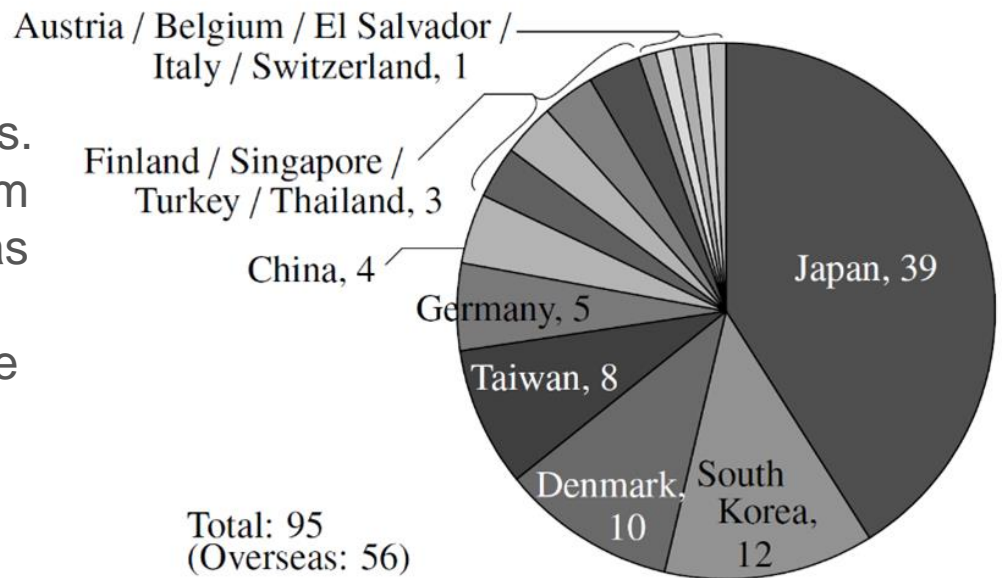
Report of Students and Young Engineers Meeting in IPEC 2018

[Students and Young Engineers Meeting Held at IPEC 2018-ECCE Asia \[Society News\]](#) | [IEEE Journals & Magazine](#) | [IEEE Xplore](#)

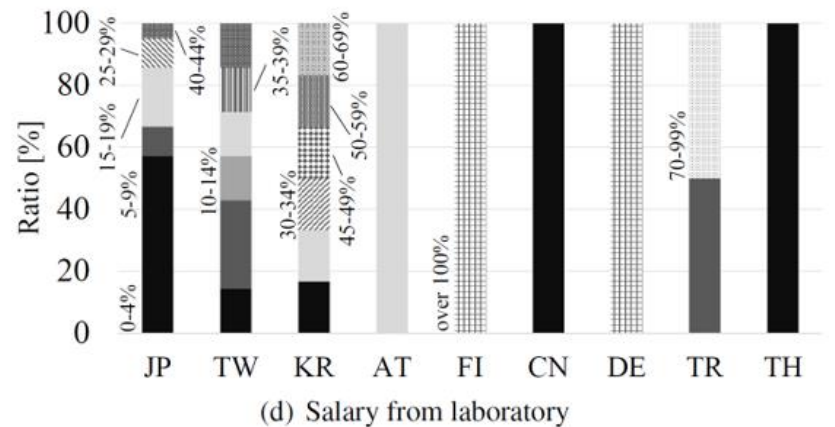
Looking forward to seeing you at the event!

A Part of Questionnaire Results in IPEC 2018 Student and Young Engineers Meeting

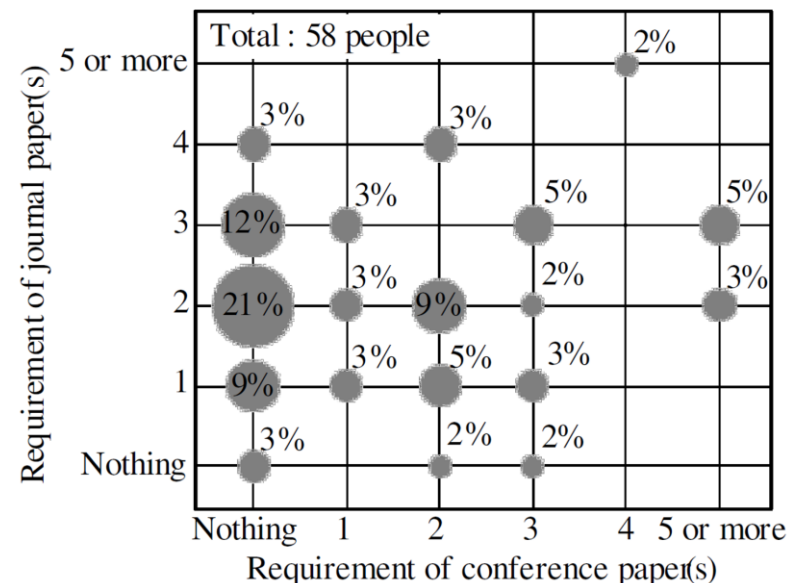
Response Status of Survey Respondents. Of the 95 total respondents, 56 were from overseas. From the responses, PPEJ has compiled a summary of the environment surrounding doctoral students around the world.



Percentage of salary from laboratory to cost of living. 67% of Japanese students receive less than 10% of their living expenses. Many Asian students receive only half the salary of their European counterparts.



Requirements for Doctoral Degree Programs at Japanese and Foreign Universities. Compared to Japan, overseas universities place more emphasis on conference presentations in addition to journal papers.



Requirements for Doctoral Degree. Most Japanese universities require two journal papers. We also investigated other conventions, such as time spent on research activities and time spent in discussions with research mentors. The IPEC2022 survey will reveal the results of the similar survey plus the situation in Corona.

