



9th International Conference on Condition Monitoring and Diagnosis 2022 (CMD 2022)

November 13-18, 2022

Hybrid style

(On-site participation at the Kitakyushu
International Conference Center,
Kitakyushu, Japan,
and online participation)

Final Call for Papers

Sponsored by:

IEEJ Technical Committee on Dielectrics and
Electrical Insulation

Technically co-sponsored by:

IEEE Dielectrics and Electrical Insulation Society

Supported by:

City of Kitakyushu
Kitakyushu Convention & Visitors Association
SECOM Science and Technology Foundation
The Institute of Electrical Installation Engineers of
Japan, Kyushu Chapter
IEEJ, Kyushu Chapter

Invitation

CMD 2022 will be held on November 13-18 in 2022, at the Kitakyushu International Conference Center in Kitakyushu, Japan, for on-site participation with several attractive events and sessions for researchers, students, engineers, professionals, etc. in this field, and online participation may be offered according to traveling circumstances. The organizing committee cordially invites you to submit papers and participate in the conference.

About CMD

The CMD was established in 2006 with the aim of providing a platform for academia, industry, technology providers, consultants, and experts in power engineering to discuss and share ideas, results, experiences and to talk over future trends and technologies in the field of electric power apparatus monitoring, fault diagnosis, and asset management. The first CMD conference was held in Changwon (Korea, 2006), followed by in Beijing (China, 2008), Tokyo (Japan, 2010), Bali (Indonesia, 2012), Jeju (Korea, 2014), Xian (China, 2016), Perth (Australia, 2018) and Thailand (Hybrid, 2020).

Slogan and Main Topics

A slogan and main topics are followings, but they don't limit the submission of papers.

Slogan:

Toward Effective Asset Management Technology, Toward Sustainable, Reliable and Secure Future

Main topics:

- Condition monitoring and diagnosis for power equipment and power systems
- Condition monitoring and diagnosis for industry, innovation and infrastructure
- Condition monitoring and diagnosis in renewable energy plants and affordable and clean energy
- Failure phenomena for power equipment based on electrical, mechanical, chemical and thermal causes
- Dielectric materials and their aging mechanisms
- Degradation assessment for power equipment
- State-of-the-art methodologies and strategies for effective replacement
- Advanced sensing techniques and IoT technologies for condition monitoring and diagnosis
- Applications of AI technologies for data mining and condition assessment
- Responsible consumption and production issues including reduce, reuse and recycle
- Carbon neutralization on diagnosis and monitoring on power equipment operation

CMD 2022 Organization:

Honorary Chair

T. Okamoto (Kanto Gakuin University, CRIEPI)

General Chair

N. Hayakawa (Nagoya University)

Vice Chair

M. Hikita (Kyushu Institute of Technology)

N. Hozumi (Toyohashi University of Technology)

Y. Tanaka (Tokyo City University)

General Secretary

T. Takahashi (CRIEPI)

Secretary in Charge of Treasury and Asian Affairs

Y. Murakami (Toyohashi University of Technology)

Y. Sekiguchi (Sumitomo Electric Industries)

N. Takamura (Fukuoka University)

Secretary in Charge of Program and Publications

H. Kojima (Nagoya University)

H. Miyake (Tokyo City University)

Secretary in Charge of Local Arrangement

M. Kozako (Kyushu Institute of Technology)

K. Uchida (Chubu Electric Power)

T. Umemoto (Mitsubishi Electric)

Secretary in General affairs

Y. Hayase (Fuji Electric)

Y. Makino (CRIEPI)

International Advisory Committee:

Chair

Norasage Pattanadech (Thailand)

Members

Ahmed Abu-Siada (Australia)

Uwe Schichler (Austria)

Greg Stone (Canada)

Shengtao Li (China)

Bo Qi (China)

Rainer Haller (Czech Republic)

Peter Werle (Germany)

Wojciech Koltunowicz (Germany)

Suwarno Harjo (Indonesia)

Naoki Hayakawa (Japan)

Toshihiro Takahashi (Japan)

Yoshimichi Ohki (Japan)

June-Ho Lee (Republic of Korea)

Yong-Joo Kim (Republic of Korea)

Giancarlo Montanari (USA)

Contacts:

E-mail: CMD_2022@ieej.org

Submission of Papers

You are invited to submit an abstract that contains no more than 300 words by ~~Apr. 8, 2022~~ ~~Apr. 25, 2022~~ **May 8, 2022 (JST 23:59)**. Visit the conference website (<http://www2.iee.or.jp/~cmd2022>) to submit your abstract. Acceptance notices will be sent to the corresponding person by ~~Apr. 24, 2022~~ **May 16, 2022**. The authors of accepted abstracts will be requested to submit paper manuscripts (4-6 pages) electronically by Jun. 17, 2022. All papers will be peer reviewed. More information on the manuscript submission will be provided on the conference website. Accepted and presented papers will be published in IEEE Xplore Digital Library as the Conference Proceedings.

Special Events

Not only oral and poster sessions, but also “Plenary sessions”, “Special sessions”, “Tutorials” “Exhibition including demonstration sessions”, etc. are being planned. Some of them will be offered as a hybrid (on-site and online) event.

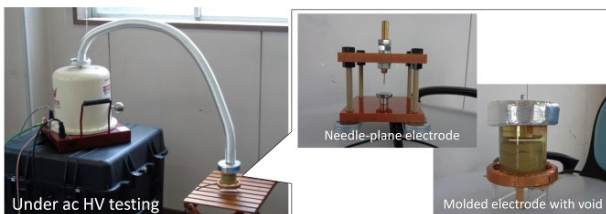
“Plenary sessions” and “Special sessions” will be related to the conference slogan. Their subjects, presenters and so on are under consideration. “Tutorials” for on-site and/or online participants are being planned. One of them will be related to a space charge measuring technique based on PEA technique. It will offer opportunities for only on-site participants to understand the topic more deeply by not only lectures but also an experience learning. Their subjects, details and fees are under consideration.

“Exhibition including demonstration sessions” will provide opportunities for presenters to introduce their developed and developing technologies and products to only on-site attendees with their actual products and so on. In the Exhibition, promotion videos of industries or universities can also be uploaded to an online participation system for online participants. In the demonstration sessions, we are planning to offer opportunities for on-site presenters to apply their technologies and products to actual partial discharge sources, a defective power cable and so on to simulate deterioration conditions of electric power apparatus.

Contact conference secretariat from the following form for detail information such as the entry fee and registration.

The previous contact form was broken, and all contact information was completely lost. I deeply apologize for my mistake. Please contact us again from contact form below.

<https://forms.gle/HbRJZNMmsgqimF2eJ7>

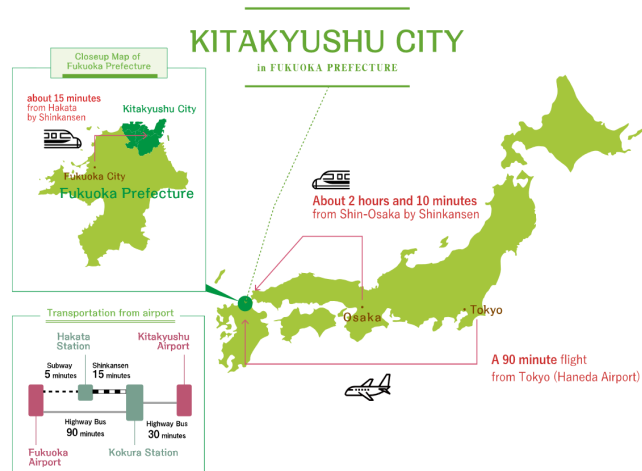


The system to generate actual partial discharge.

About Kitakyushu and On-site Venue

Kitakyushu is situated in the western area in Japan. It takes 90 minutes by airplane from Tokyo, or it takes 2 hours and 10 minutes by Japanese bullet train called Shinkansen from Osaka. For more information, please visit the following websites

<https://www.gururich-kitaq.com/en/>



The conference venue will be the Kitakyushu International Conference Center. It takes 5 minutes from the JR Kokura Station on foot. The following website shows more detail information:

<http://www.kitaqmeeting.jp/access>

Getting to Kitakyushu International Conference Center(KICC)



Important Dates

Abstract Submission Deadline:

~~Apr. 8, 2022~~ ~~Apr. 25, 2022 (JST 23:59)~~

May 8, 2022 (JST 23:59)

Abstract acceptance/Rejection Notices:

~~Apr. 24, 2022~~ **May 16, 2022**

Full paper Submission Deadline: Jun. 17, 2022

Conference Dates: Nov. 13 - 18, 2022

Registration Fees (tentative)

Tentative registration fees are shown as follows. The organizing committee will decide on-site and online registration fees in consideration of all tools for online communications and options of on-site and online events, etc.

Registration fees are ¥45,000 (Japanese yen) for members of IEEEJ, IEEE, CIGRE, CES, KIEE, or IEIEJ, ¥80,000 for non-members, and ¥15,000 for students with valid IDs. Manuscript submission fee is ¥10,000 per one manuscript. This fee will be deducted from the registration fee for the authors presenting their papers, although the maximum deduction is ¥10,000 per one attendee.

About Online participation

The organizing committee will offer an online participation system to get opportunities of communication and discussion as much as possible.

Language

The working language of the conference is English. All printed matter will appear in English.

CMD 2022 Website

<http://www2.iee.or.jp/~cmd2022>



Conference Secretariat

Dr. Yuta Makino:

c/o Grid Innovation Research Laboratory,
Central Research Institute of Electric Power Industry
2-6-1 Nagasaka, Yokosuka, Kanagawa 240-0196, Japan
E-mail: CMD_2022@ieej.org